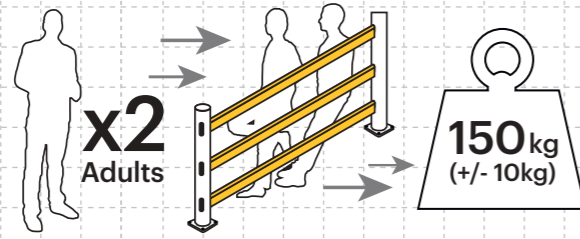


# Testing and Technical Information

Tested to the global benchmark in barrier safety

**bsi. PAS 13**  
Code of Practice for Workplace Safety Barriers

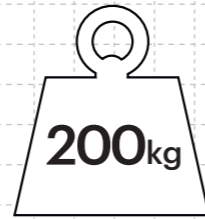
How the load of a pedestrian barrier is calculated



Weight of 2 x Leaning Adults = Static Load Barrier should withstand

Tested Static Load

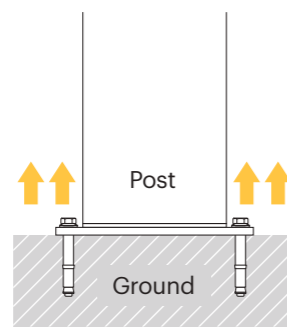
**2kN**



Deflection at Max Energy  
230mm

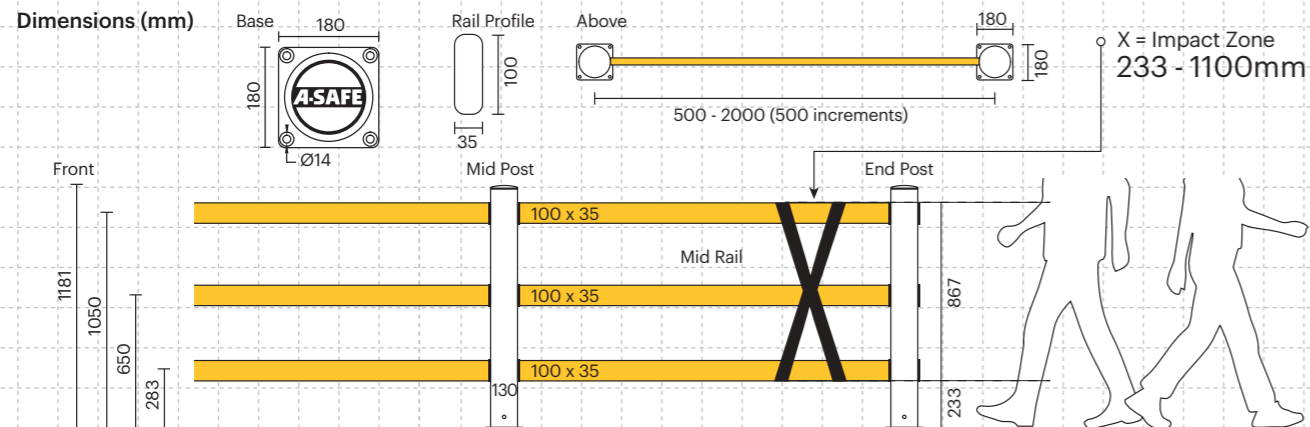


Lifting Force  
1kN



Material Properties	MEMAPLEX™
Temperature Range	-10°C to 50°C
Ignition Temperature	370°C to 390°C
Flash Point	350°C to 370°C
Toxicity	Not Hazardous
Chemical Resistance	Excellent - ISO/TR 10358
Weathering Stability (Grey Scale)	5/5*
Light Stability (Blue Wool Scale)	7/8**
Static Rating (Surface Resistivity)	1015 - 1016 Ω
Hygiene Seals	No

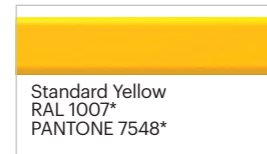
\* Weathering scale 1 is very poor and 5 is excellent  
\*\* Light stability scale 1 is very poor and 8 is excellent



### Post Options



### Rail Options



### Colour Combinations

\*Please note that the RAL and PANTONE colours listed are the closest match to standard A-SAFE colours, but may not be exact matches of the actual product colour and should be used for guidance only.



eFlex™

Pedestrian Barrier 3 Rail

**A-SAFE**



Designed to guide pedestrians around a facility, restricting them to defined routes both inside and out.

The flexible, high-visibility barriers clearly outline pedestrian walkways and act as a physical barrier, ensuring visitors and personnel do not accidentally stray from safe areas.

Ideal for defining traffic flow, separating people from hazards, and equipping build base specifications.

Tested to the global benchmark in barrier safety

**bsi. PAS 13**  
Code of Practice for Workplace Safety Barriers

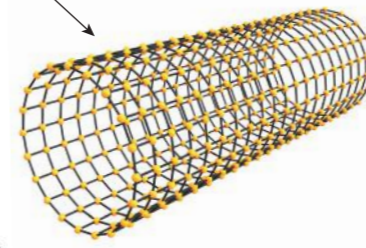


# Engineered for performance

Whether in the resilience, flexibility and in-built memory of our exclusive Memaplex™ material or the unrivalled energy absorption of our unique 3-phase coupling system, a wealth of technical ingenuity goes into every A-SAFE product to ensure that it performs perfectly every time you need it to. We are continuously innovating to solve the greatest workplace safety challenges on behalf of our customers and our numerous patents attest to our industry-leading commitment to research and development.

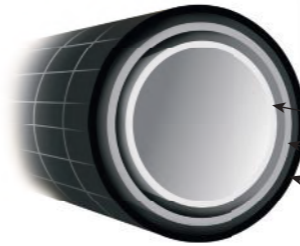
## MEMAPLEX™

**Advanced Engineering**  
Molecular reorientation during manufacturing creates a unique built-in memory that enables the barrier to fully recover following impacts.



### Revolutionary 3-Layered Material

- Inner strengthening core
- Central absorption zone
- Outer UV stabilised colour layer



○ **Ultimate strength polymer** created from an exclusive composition of the most sophisticated polyolefins and rubber additives, expertly blended for unequalled strength and flexibility.

○ **Ultra-low maintenance material** is chemical and water resistant, non-corrosive, non-scratch and self coloured so no repainting, rusting, flaking or corrosion.

○ **Ultra simple assembly** with push-on caps for a fast installation.

○ **Multi-directional system** creates simplified pedestrian guidance for any facility.

○ **Exclusive modularity** allows rails and posts to be replaced in-situ without removing adjacent barrier sections.

○ **Ergonomic design** with no sharp edges.

○ **Environmentally friendly** and 100% recyclable.

○ **Self coloured and UV stabilised** for continued visibility and long lasting aesthetics with no repainting.

○ **Zinc nickel, electrophoretic coating** on base plates as standard, provides advanced protection against corrosion damage.

**Specially designed rail insert** creates snug grip at post joints and neat finish at post ends. Quick-detach feature for simple addition and reconfiguration of rails.

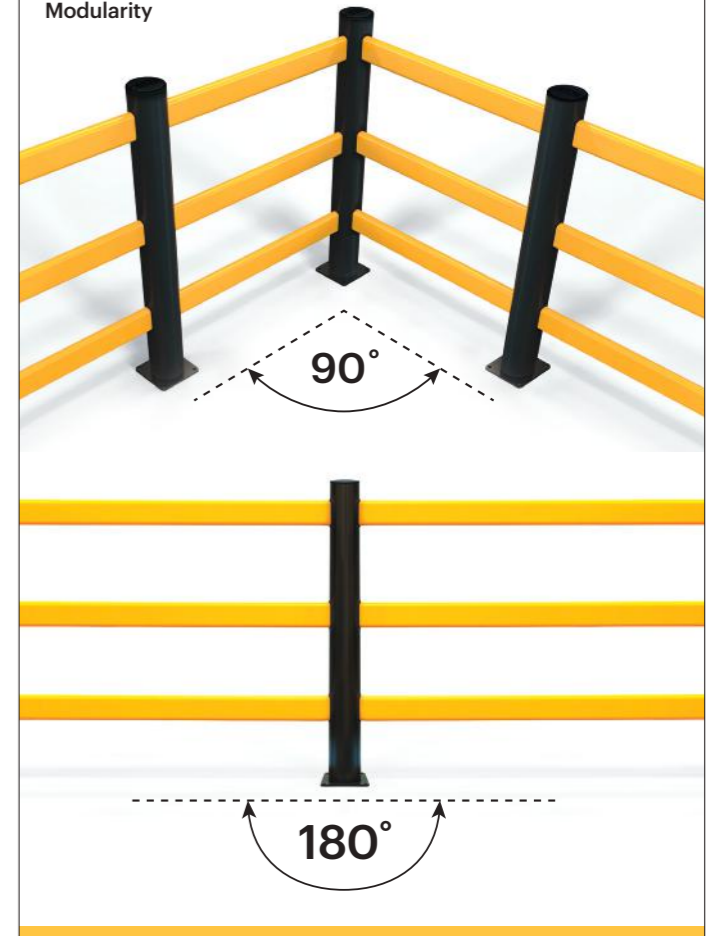


### Rail Configurations



Multiple rail options with one, two, or three rail configurations possible at every post. Easily interchangeable to meet the pedestrian guidance needs of any facility.

### Modularity



Complete modularity allows simple layout configurations to guide pedestrians along designated safe routes.

