



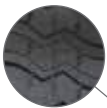
MINING & EARTHMOVER

MAGNA MA02

E3+/L3+

The Magna MA02 is designed for use on wheel loaders, articulated dump trucks, scrapers and dozers.

Sidewall protection and flotation are enhanced by the wide shoulder design.



Improved traction and performance through nondirectional E3+/L3+ tread.



All steel radial construction. Improved protector plies optimize load performance and operator comfort.



New improved technology of the high-tech casing reduces heat build up inside the tyre.



Tyre size	Pattern	Load symbol	Tra code	Max. speed (km/h)	Load/speed index	Single max. load/pressure	Rim	Overall diameter (mm)	Section width (mm)	Tread depth (mm)	Tyre weight (kg)
23.5R25	MA02	**	E3+	50	185B	9250 kg/5.0 bar	19.50/2.5	1626	610	41	350
			L3+	10	201A2	14500 kg/6.5 bar					
26.5R25	MA02	**	E3+	50	193B	11500 kg/5.0 bar	22.00/3.0	1754	695	41	449
			L3+	10	209A2	18450 kg/6.5 bar					
29.5R25	MA02	**	E3+	50	200B	13950 kg/5.0 bar	25.00/3.5	1868	748	44	597
			L3+	10	216A2	22350 kg/6.5 bar					



Magna Tyres Group

P.O. Box 436, 5140 AK Waalwijk, The Netherlands
Elzenweg 7, 5144 MB Waalwijk, The Netherlands

Phone: +31 416 675 220, Fax: +31 416 820 037
Email: info@magnatyres.com, www.magnatyres.com

