



HTL 4010



Precision and flexibility

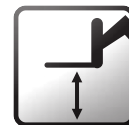
- Proportional control of movements
- Hydrostatic transmission and inching pedal

Compact and versatile

- Stabilizers lowering on a 2,26 m width
- 5 m length
- Short turning radius
- Driving position reduces fatigue at work

Comfort and ergonomomy

- LMI easy to read with cut off dangerous movements
- LMI easy to read with cut off dangerous movements
- Smart control 4 in 1 joystick



Placing height : 10 m



Maximum lift capacity :
4000 kg

Haulotte 
GROUP

More than lifting



HTL 4010



TELEHANDLER

Haulotte GROUP

Placing height : 10 m
Maximum lift capacity : 4000 kg



PERFORMANCES

| | |
|------------------------------|---------|
| Maximum lift capacity | 4000 kg |
| Lift capacity to full height | 2500 kg |
| Lift capacity at full reach | 1200 kg |
| Maximum fork height | 10 m |
| Reach at maximum fork height | 2.2 m |
| Maximum forward reach | 7.2 m |



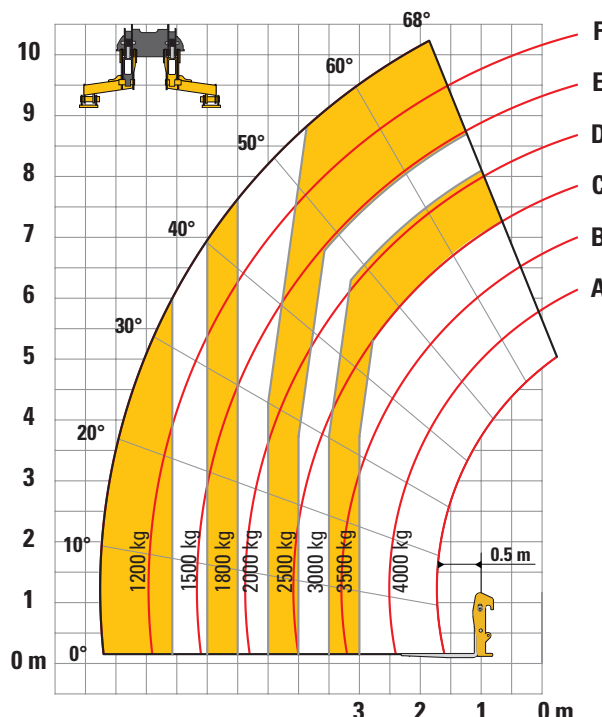
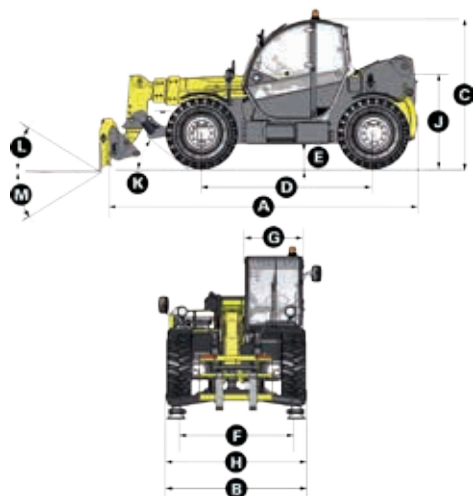
DIMENSIONS

| | |
|------------------------------------|-------------|
| A Length | 4.96 m |
| B Width | 2.26 m |
| C Height | 2.42 m |
| D Wheelbase | 2.78 m |
| E Ground clearance | 42 cm |
| F Track width | 1.88 m |
| G Cab width | 0.96 m |
| H Height to high boom pivot | 1.6 m |
| J Approach angle | 30° |
| K Upper rotation of forks | 18° |
| L Lower rotation of forks | 104° |
| Turning radius (outside wheels) | 3.7 m |
| Weight with forks | 8630 kg |
| Tyres type | 405/70 - 24 |



ENGINE

| | TIER III | TIER IV |
|---------------------|----------------------|----------------------|
| Engine model | PERKINS | KOHLER |
| Engine Capacity | 4400 cm ³ | 3400 cm ³ |
| Engine power output | 70 kW | 55,4 kW |
| Engine torque | 392 Nm | 380 Nm |
| Transmission type | Hydrostatic | |
| Fuel tank | 120 l | 120 l |
| Engine oil | 7 l | 15 l |



STANDARD EQUIPMENT

- Heavy duty Hydrostatic transmission
- 4 wheel drive and steer
- Gear equipment pump
- Proportional controls for movement of boom/telescopic arm/excavation and accessories
- Safety valves on hydraulic jacks
- Possibility to combine mast/telescopic boom/excavation and accessories movements
- Auxilliary hydraulic ports
- Stabilizers lowering on a 2,26 m width
- ROPS/FOPS cabin with heating and ventilation

OPTIONS AND ACCESSORIES

- Cold Weather Package
- Biodegradable oil
- Cold environment oil
- Hot environment oil
- Air conditioning
- Working lights
- Jibs
- Electrically hydraulic controls
- Working lights

