

**TOUGH
IS OUR
WAY OF
LIFE**



Construction Tires 2014

General Reference Data

Load index equivalences in kg and lb

LI	kg	lb	LI	kg	lb	LI	kg	lb	LI	kg	lb	LI	kg	lb	LI	kg	lb
100	1,764	800	121	3,200	1,450	142	5,840	2,650	160	9,920	4,500	181	18,190	8,250	202	33,070	15,000
101	1,819	825	122	3,310	1,500	143	6,010	2,725	161	10,200	4,625	182	18,740	8,500	203	34,180	15,500
102	1,874	850	123	3,420	1,550	144	6,170	2,800	162	10,470	4,750	183	19,290	8,750	204	35,280	16,000
103	1,929	875	124	3,530	1,600	145	6,390	2,900	163	10,750	4,875	184	19,840	9,000	205	36,380	16,500
104	1,985	900	125	3,640	1,650	146	6,610	3,000	164	11,020	5,000	185	20,390	9,250	206	37,480	17,000
105	2,040	925	126	3,750	1,700	147	6,780	3,075	165	11,350	5,150	186	20,940	9,500	207	38,590	17,500
106	2,095	950	127	3,860	1,750	148	6,950	3,150	166	11,690	5,300	187	21,500	9,750	208	39,690	18,000
110	2,337	1,060	128	3,970	1,800	149	7,170	3,250	170	13,230	6,000	188	22,050	10,000	209	40,790	18,500
111	2,403	1,090	129	4,080	1,850	150	7,390	3,350	171	13,560	6,150	189	22,710	10,300	210	41,890	19,000
112	2,470	1,120	130	4,190	1,900	151	7,610	3,450	172	13,890	6,300	190	23,370	10,600	211	43,000	19,500
113	2,536	1,150	131	4,300	1,950	152	7,830	3,550	173	14,330	6,500	191	24,030	10,900	212	44,100	20,000
114	2,602	1,180	132	4,410	2,000	153	8,050	3,650	174	14,770	6,700	192	24,690	11,200	213	45,200	20,600
115	2,679	1,215	133	4,540	2,060	154	8,270	3,750	175	15,210	6,900	193	25,360	11,500	214	46,750	21,200
116	2,756	1,250	134	4,670	2,120	155	8,540	3,875	176	15,650	7,100	194	26,020	11,800	215	48,070	21,800
117	2,833	1,285	135	4,810	2,180	156	8,820	4,000	177	16,090	7,300	195	26,790	12,150	216	49,390	22,400
118	2,911	1,320	136	4,940	2,240	157	9,090	4,125	178	16,530	7,500	196	27,560	12,500	217	50,700	23,000
119	2,999	1,360	140	5,510	2,500	158	9,370	4,250	179	17,090	7,750	200	30,870	14,000	218	52,040	23,600
120	3,090	1,400	141	5,680	2,575	159	9,650	4,375	180	17,640	8,000	201	31,970	14,500	219	53,580	24,300

Inflation units

Inflation Pressure Units			
Kpa	Bar	Psi	kg/cm ²
100	1	15	1.0
150	1.5	22	1.5
200	2	29	2
250	2.5	36	2.6
300	3	44	3.1
350	3.5	51	3.6
400	4	58	4.1
450	4.5	65	4.6
500	5	73	5.1
550	5.5	80	5.6
600	6	87	6.1
650	6.5	94	6.6
700	7	102	7.1
750	7.5	109	7.7
800	8	116	8.2
850	8.5	123	8.7
900	9	131	9.2
950	9.5	138	9.7
1000	10	145	10.2
1050	10.5	152	10.7

Speed Index

Speed km/h	Speed index
5	A1
10	A2
15	A3
20	A4
25	A5
40	A8
50	B

TABLE OF CONTENTS

SKID STEER LOADERS

Solideal Hauler SKS _____	4
Solideal Hauler SKZ _____	6
Solideal Hauler XD44 _____	7
Solideal Xtra Wall _____	8
Solideal Gripper _____	10
Solideal SolidAir SKS _____	11
Solideal SolidAir SM _____	12
Solideal Safetymaster SKS _____	13
Solideal Safetymaster SM _____	14

BACKHOE LOADERS

Solideal BHZ _____	15
Solideal SL R4 _____	16
Solideal SLA R4 _____	18
Solideal MR F3 _____	19

TELEHANDLERS | COMPACT WHEEL LOADERS | MINI-DUMPERS

Solideal SolidAir TLH _____	20
Solideal SL G3 _____	21
Solideal SL G2 _____	22
Solideal TH2 _____	23
Solideal 4L I3 _____	24
Solideal TM R4 _____	25
Solideal 4L R1 _____	26

COMPACTOR

Solideal SM C1 _____	28
----------------------	----

WHEEL EXCAVATOR

Solideal WL _____	29
Solideal WEX _____	30

TRUCK MOUNTED FORKLIFTS

Solideal SKS R1 _____	31
-----------------------	----

WHEEL LOADERS | MOTOR GRADERS | ARTICULATED DUMP TRUCKS

Solideal LM E3/L3/G3 _____	32
Solideal LM L2/G2 _____	34
Solideal SKZ E3/G3 _____	35
Solideal RM E3/L3 _____	36
Solideal SRGP E3/L3/G3 _____	37
Solideal SRAT E3 _____	38
Solideal SRLD L5 _____	39
Solideal SRLS L5 _____	40
COMPLET LINE OVERVIEW _____	42



WHEEL LOADERS MOTOR GRADERS ARTICULATED DUMP TRUCKS

**TOUGH
IS OUR
WAY OF
LIFE**

SOLIDEAL LM E3/L3/G3

**OPTIMIZED
PERFORMANCE
ON ALL SURFACES**

Lug to void ratio: 50-55%

- PERFORMANCE**
- Puncture resistance ●●●●●
 - Driving comfort ●●●●●●
 - Self cleanout ●●●●●
 - Sidewall protection ●●●●●●
 - Rim protection ●●●●●

Off-Road • On-Road



Features

Engineered Non-directional Tread Pattern

Heavy-duty Carcass

Reinforced tapered tread

Benefits

Optimized traction on mixed and hard surfaces

Improved side impact resistance and stability

Optimized tread wear rate for extended life

TIRE SIZE	PR	TT / TBL5	RIM SIZE		ACTUAL TIRE DIMENSIONS [mm] [inches]					LOAD INDEX	SPEED SYMBOL	SERVICE	TRA CODE	MAXIMUM TIRE LOAD [kg] [lb]																					
			RECOMENDED	ALTERNATIVE	O.D.	O.W.	O.T.D. [mm] [32nd]	S.L.R.	R.C.					1.50	1.75	2.00	2.25	2.50	2.75	3.00	3.25	3.50	3.75	4.00	4.25	4.50	4.75	5.00	5.25	5.50	5.75				
														21	25	29	32	36	39	43	46	50	54	57	61	64	68	71	75	79	82				
15.5-25	12	TBL5	12.00/1.3	13.00/1.4 (DC)	1283	417	26	578	3852	168	A2	LOADER-DOZER	L3	-	-	-	-	4250	4475	4675	4875	5100	5350	5600	-	-	-	-	-	-	-	-			
					-	-	-	-	-	-	-	9400	9900	10300	10750	11250	11800	12350	-	-	-	-	-	-	-	-	-	-	-	-	-	-	-	-	
					50.5	16.4	33	22.8	151.7	149	B	EARTH-MOVER	E3	1900	2000	2180	2650	-	-	-	-	-	-	-	-	-	-	-	-	-	-	-	-	-	-
15.5-25	16	TBL5	12.00/1.3	13.00/1.4 (DC)	1285	407	26	581	3898	175	A2	LOADER-DOZER	L3	-	-	-	-	4250	4475	4675	4875	5100	5350	5600	5800	6000	6150	6400	6650	6900	-	-	-	-	
					-	-	-	-	-	-	-	9400	9900	10300	10750	11250	11800	12350	12800	13250	13600	14150	14700	15250	-	-	-	-	-	-	-	-	-	-	-
					50.6	16.0	33	22.9	153.5	156	B	EARTH-MOVER	E3	2250	2575	2775	3000	3250	3650	4000	-	-	-	-	-	-	-	-	-	-	-	-	-	-	-
17.5-25	12	TBL5	14.00/1.5	14.00/1.3; 13.00/1.4 (DC)	1380	467	26	619	4093	171	A2	LOADER-DOZER	L3	-	4250	4500	4750	5050	5350	5600	5900	6150	-	-	-	-	-	-	-	-	-	-	-	-	
					-	-	-	-	-	-	-	9400	9950	10500	11150	11800	12350	13000	13600	-	-	-	-	-	-	-	-	-	-	-	-	-	-	-	-
					54.3	18.4	33	24.4	161.1	145	A8	GRADER	G3	2350	2625	2900	-	-	-	-	-	-	-	-	-	-	-	-	-	-	-	-	-	-	-
17.5-25	16	TBL5	14.00/1.5	14.00/1.3; 13.00/1.4 (DC)	1391	460	26	628	4172	177	A2	LOADER-DOZER	L3	-	4250	4500	4750	5050	5350	5600	5900	6150	6400	6650	6900	7100	7300	-	-	-	-	-	-		
					-	-	-	-	-	-	-	9400	9950	10500	11150	11800	12350	13000	13600	14150	14700	15250	15650	16100	-	-	-	-	-	-	-	-	-	-	
					54.8	18.1	33	24.7	164.3	150	A8	GRADER	G3	2250	2625	2900	2900	3100	3350	-	-	-	-	-	-	-	-	-	-	-	-	-	-	-	-
17.5-25	16	TBL5	14.00/1.5	14.00/1.3; 13.00/1.4 (DC)	1391	460	26	628	4172	177	A2	LOADER-DOZER	L3	-	4250	4500	4750	5050	5350	5600	5900	6150	6400	6650	6900	7100	7300	-	-	-	-	-	-		
					-	-	-	-	-	-	-	9400	9950	10500	11150	11800	12350	13000	13600	14150	14700	15250	15650	16100	-	-	-	-	-	-	-	-	-	-	
					54.8	18.1	33	24.7	164.3	158	B	EARTH-MOVER	E3	2800	3100	3375	3650	3850	4050	4250	-	-	-	-	-	-	-	-	-	-	-	-	-	-	-

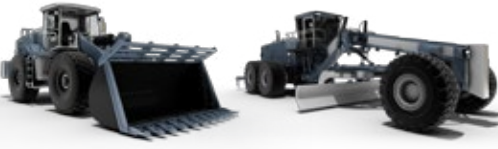


WHEEL LOADERS MOTOR GRADERS ARTICULATED DUMP TRUCKS

**TOUGH
IS OUR
WAY OF
LIFE**

SOLIDEAL LM E3/L3/G3 (cont.)

TIRE SIZE	PR	TT / TBLs	RIM SIZE		ACTUAL TIRE DIMENSIONS [mm] [LOAD INDEX	SPEED SYMBOL	SERVICE	TRA CODE																									
			RECOMMENDED	ALTERNATIVE	O.D.	O.W.	O.T.D. [mm] [32nd]	S.L.R.	M.D.S.	R.C.					1.50	1.75	2.00	2.25	2.50	2.75	3.00	3.25	3.50	3.75	4.00	4.25	4.50	4.75	5.00	5.25	5.50	5.75							
															21	25	29	32	36	39	43	46	50	54	57	61	64	68	71	75	79	82							
20.5-25	16	TBLs	17.00/2.0	17.00/1.7	1503	545	32	646	661	4365	181	A2	LOADER-DOZER	L3	-	5500	5900	6300	6700	7100	7500	7900	8250	-	-	-	-	-	-	-	-	-	-						
					-	-	-	-	-	-	-	-	-	-	-	-	-	-	-	-	-	-	-	-	-	-	-	-	-	-	-	-	-	-					
					-	-	-	-	-	-	-	-	-	-	-	-	-	-	-	-	-	-	-	-	-	-	-	-	-	-	-	-	-	-					
					7350	7850	8350	8850	-	-	-	-	-	-	-	-	-	-	-	-	-	-	-	-	-	-	-	-	-	-	-	-	-	-					
20.5-25	20	TBLs	12.00/1.3	13.00/1.4 (DC)	1285	407	26	581	-	3898	186	A2	LOADER-DOZER	L3	-	5500	5900	6300	6700	7100	7500	7900	8250	8550	8875	9200	9500	-	-	-	-	-	-	-					
					-	-	-	-	-	-	-	-	-	-	-	-	-	-	-	-	-	-	-	-	-	-	-	-	-	-	-	-	-	-					
					-	-	-	-	-	-	-	-	-	-	-	-	-	-	-	-	-	-	-	-	-	-	-	-	-	-	-	-	-	-	-				
					8400	9150	9950	10650	11350	12050	12700	13250	-	-	-	-	-	-	-	-	-	-	-	-	-	-	-	-	-	-	-	-	-	-	-				
23.5-25	20	TBLs	14.00/1.5	14.00/1.3; 13.00/1.4 (DC)	1380	467	26	619	-	4093	177	B	EARTH-MOVER	E3	-	5300	4750	6150	6550	6950	7300	-	-	-	-	-	-	-	-	-	-	-	-	-					
					-	-	-	-	-	-	-	-	-	-	-	-	-	-	-	-	-	-	-	-	-	-	-	-	-	-	-	-	-	-	-				
					-	-	-	-	-	-	-	-	-	-	-	-	-	-	-	-	-	-	-	-	-	-	-	-	-	-	-	-	-	-	-				
					11700	10500	13600	14450	15350	16100	-	-	-	-	-	-	-	-	-	-	-	-	-	-	-	-	-	-	-	-	-	-	-	-	-	-			
23.5-25	24	TBLs	14.00/1.5	14.00/1.3; 13.00/1.4 (DC)	1391	460	26	628	-	4172	198	A2	LOADER-DOZER	L3	-	5500	10000	10500	11000	11500	12050	12650	13200	-	-	-	-	-	-	-	-	-	-	-	-	-			
					-	-	-	-	-	-	-	-	-	-	-	-	-	-	-	-	-	-	-	-	-	-	-	-	-	-	-	-	-	-	-	-			
					-	-	-	-	-	-	-	-	-	-	-	-	-	-	-	-	-	-	-	-	-	-	-	-	-	-	-	-	-	-	-	-			
					14900	16100	17200	18200	-	-	-	-	-	-	-	-	-	-	-	-	-	-	-	-	-	-	-	-	-	-	-	-	-	-	-	-			
26.5-25	20	TBLs	14.00/1.5	14.00/1.3; 13.00/1.4 (DC)	1391	460	26	628	-	4172	188	B	EARTH-MOVER	E3	-	6750	7300	7800	8250	8750	9250	9650	10000	-	-	-	-	-	-	-	-	-	-	-	-	-			
					-	-	-	-	-	-	-	-	-	-	-	-	-	-	-	-	-	-	-	-	-	-	-	-	-	-	-	-	-	-	-	-			
					-	-	-	-	-	-	-	-	-	-	-	-	-	-	-	-	-	-	-	-	-	-	-	-	-	-	-	-	-	-	-	-	-		
					14900	16100	17200	18200	19300	20400	21300	22100	-	-	-	-	-	-	-	-	-	-	-	-	-	-	-	-	-	-	-	-	-	-	-	-	-		
26.5-25	28	TBLs	22.00/3.0	-	1767	690	40	786	-	5274	203	A2	LOADER-DOZER	L3	-	6750	7300	7800	8250	8750	9250	9650	10000	-	-	-	-	-	-	-	-	-	-	-	-	-	-		
					-	-	-	-	-	-	-	-	-	-	-	-	-	-	-	-	-	-	-	-	-	-	-	-	-	-	-	-	-	-	-	-	-		
					-	-	-	-	-	-	-	-	-	-	-	-	-	-	-	-	-	-	-	-	-	-	-	-	-	-	-	-	-	-	-	-	-	-	
					10900	11500	12150	12850	13600	14000	15000	15500	16000	17000	17500	-	-	-	-	-	-	-	-	-	-	-	-	-	-	-	-	-	-	-	-	-	-	-	
29.5-25	28	TBLs	25.00/3.5	-	1873	770	36	835	-	5590	207	A2	LOADER-DOZER	L3	-	10900	11500	12150	12850	13600	14000	15000	15500	16000	17000	17500	-	-	-	-	-	-	-	-	-	-	-	-	
					-	-	-	-	-	-	-	-	-	-	-	-	-	-	-	-	-	-	-	-	-	-	-	-	-	-	-	-	-	-	-	-	-	-	
					-	-	-	-	-	-	-	-	-	-	-	-	-	-	-	-	-	-	-	-	-	-	-	-	-	-	-	-	-	-	-	-	-	-	-
					8000	8500	9250	10000	10300	10900	11500	-	-	-	-	-	-	-	-	-	-	-	-	-	-	-	-	-	-	-	-	-	-	-	-	-	-	-	-



WHEEL LOADERS MOTOR GRADERS

**TOUGH
IS OUR
WAY OF
LIFE**

SOLIDEAL LM L2/G2

EXCELLENT TRACTION AND WEAR RESISTANCE

Lug to void ratio: 40-45%

PERFORMANCE

- Puncture resistance ●●●
- Driving comfort ●●●●
- Self cleanout ●●●●●●
- Sidewall protection ●●●●●●
- Rim protection ●●●●

Off-Road



Features

Benefits

Heavy-duty Carcass	Improved side impact resistance and stability
Deep Hauler Stepped Tread Design	Improved self-cleaning and stone ejection for excellent traction
Reduced Crowning for Flatter Tread Profile	Promotes even wearing Enhanced tread life Improved traction and stability

TIRE SIZE	PR	TT / TBLS	RIM SIZE		ACTUAL TIRE DIMENSIONS (mm) (inches)					LOAD INDEX	LOAD INDEX (**)	SPEED SYMBOL	SERVICE	TRA CODE	MAXIMUM TIRE LOAD [kg] [lb]																					
			RECOM-MENDED	ALTERNATIVE	O.D.	O.W.	O.T.D. [mm] [32nd]	S.L.R.	R.C.						1.50	1.75	2.00	2.25	2.50	2.75	3.00	3.25	3.50	3.75	4.00	4.25	4.50	4.75	5.00	5.25	5.50					
																	21	25	29	32	36	39	43	46	50	54	57	61	64	68	71	75	79			
15.5-25	12	TBLS	12.00/13	13.00/1.4 (DC)	1272	408	26	569	3822	168	-	A2	LOADER-DOZER	L2	-	-	-	-	4250	4475	4675	4875	5100	5350	5600	-	-	-	-	-	-	-	-			
										142	-	A8	GRADER	G2	1900	2000	2180	2650	-	-	-	-	-	-	-	-	-	-	-	-	-	-	-	-		
												149	-	B	EARTHMOVER	E2	2350	2575	2775	3000	3250	-	-	-	-	-	-	-	-	-	-	-	-	-	-	
														5200	5700	6150	6600	7150	-	-	-	-	-	-	-	-	-	-	-	-	-	-	-	-		
														-	-	-	-	4250	4475	4675	4875	5100	5350	5600	5800	6000	6150	6400	6650	6900	-	-	-	-	-	-
														1900	2000	2180	2500	2800	3000	-	-	-	-	-	-	-	-	-	-	-	-	-	-	-	-	-
15.5-25	16	TBLS	12.00/13	13.00/1.4 (DC)	1274	414	26	564	3834	175	-	A2	LOADER-DOZER	L2	-	-	-	-	4250	4475	4675	4875	5100	5350	5600	5800	6000	6150	6400	6650	6900					
										146	-	A8	GRADER	G2	1900	2000	2180	2500	2800	3000	-	-	-	-	-	-	-	-	-	-	-	-	-	-	-	
												156	-	B	EARTHMOVER	E2	2350	2575	2775	3000	3250	3650	4000	-	-	-	-	-	-	-	-	-	-	-	-	-
														5200	5700	6150	6600	7150	8050	8850	-	-	-	-	-	-	-	-	-	-	-	-	-	-	-	
														-	-	-	-	4250	4500	4750	5050	5350	5600	5900	6150	-	-	-	-	-	-	-	-	-	-	-
														1900	2000	2180	2500	2800	3000	-	-	-	-	-	-	-	-	-	-	-	-	-	-	-	-	-
17.5-25	12	TBLS	14.00/15	14.00/1.3, 13.00/1.4 (DC)	1335	385	26	593	3972	171	-	A2	LOADER-DOZER	L2	-	9400	9950	10500	11150	11800	12350	13000	13600	-	-	-	-	-	-	-	-	-	-	-		
												145	-	A8	GRADER	G2	2350	2625	2900	-	-	-	-	-	-	-	-	-	-	-	-	-	-	-	-	
												153	-	B	EARTHMOVER	E2	5200	5800	6400	-	-	-	-	-	-	-	-	-	-	-	-	-	-	-	-	
														-	-	-	-	4250	4500	4750	5050	5350	5600	5900	6150	-	-	-	-	-	-	-	-	-	-	
														1900	2000	2180	2500	2800	3000	-	-	-	-	-	-	-	-	-	-	-	-	-	-	-	-	-
														2350	2625	2900	2900	3100	3350	-	-	-	-	-	-	-	-	-	-	-	-	-	-	-	-	-
17.5-25	16	TBLS	14.00/15	14.00/1.3, 13.00/1.4 (DC)	1337	460	26	599	4013	177	-	A2	LOADER-DOZER	L2	-	9400	9950	10500	11150	11800	12350	13000	13600	14150	14700	15250	15650	16100	-	-	-	-	-	-		
												150	-	A8	GRADER	G2	2350	2625	2900	2900	3100	3350	-	-	-	-	-	-	-	-	-	-	-	-	-	
												158	-	B	EARTHMOVER	E2	5200	5800	6400	6400	6850	7400	-	-	-	-	-	-	-	-	-	-	-	-	-	-
														-	-	-	-	4250	4500	4750	5050	5350	5600	5900	6150	-	-	-	-	-	-	-	-	-	-	
														1900	2000	2180	2500	2800	3000	-	-	-	-	-	-	-	-	-	-	-	-	-	-	-	-	-
														2350	2625	2900	2900	3100	3350	-	-	-	-	-	-	-	-	-	-	-	-	-	-	-	-	-
20.5-25	16	TBLS	17.00/20	17.00/1.7	1506	535	30	650	4453	181	-	A2	LOADER-DOZER	L2	-	12150	13000	13900	14800	15650	16550	17450	18200	-	-	-	-	-	-	-	-	-	-	-		
												156	-	A8	GRADER	G2	3325	3550	3775	4000	-	-	-	-	-	-	-	-	-	-	-	-	-	-	-	
														7350	7850	8350	8850	-	-	-	-	-	-	-	-	-	-	-	-	-	-	-	-	-	-	
														-	-	-	-	5500	5900	6300	6700	7100	7500	7900	8250	-	-	-	-	-	-	-	-	-	-	-
														1900	2000	2180	2500	2800	3000	-	-	-	-	-	-	-	-	-	-	-	-	-	-	-	-	-
														2350	2625	2900	2900	3100	3350	-	-	-	-	-	-	-	-	-	-	-	-	-	-	-	-	-
20.5-25	20	TBLS	17.00/20	-	1487	550	30	663	4438	186	-	A2	LOADER-DOZER	L2	-	5500	5900	6300	6700	7100	7500	7900	8250	8550	8875	9200	9500	-	-	-	-	-	-	-		
												170	-	B	EARTHMOVER	E2	8400	9150	9950	10650	11350	12050	-	-	-	-	-	-	-	-	-	-	-	-	-	-
														-	-	-	-	5500	5900	6300	6700	7100	7500	7900	8250	8550	8875	9200	9500	-	-	-	-	-	-	
														1900	2000	2180	2500	2800	3000	-	-	-	-	-	-	-	-	-	-	-	-	-	-	-	-	
														2350	2625	2900	2900	3100	3350	-	-	-	-	-	-	-	-	-	-	-	-	-	-	-	-	-
														3800	4150	4500	4825	5150	5450	-	-	-	-	-	-	-	-	-	-	-	-	-	-	-	-	-



WHEEL LOADERS

**TOUGH
IS OUR
WAY OF
LIFE**

SOLIDEAL SKZ E3/L3

**ENHANCED DURABILITY
ON MIXED/HARD
APPLICATIONS**

Lug to void ratio: 55-60%

PERFORMANCE	Puncture resistance	●●●●●●●●
	Driving comfort	●●●●●●
	Self cleanout	●●●
	Sidewall protection	●●●●●●
	Rim protection	●●●●●

On-Road



Features	Benefits
Non-Directional Extra Deep Tread	Improved tread life and resistance to punctures
Massive Lug-to-Void Ratio	For excellent durability and resistance to tread impacts
Heavy-duty Carcass	Improved side impact resistance and stability

TIRE SIZE	PR	TREAD PATTERN	TT / TBLs	RIM SIZE		ACTUAL TIRE DIMENSIONS [mm] [inches]					LOAD INDEX	SPEED SYMBOL	TRA CODE	MAXIMUM TIRE LOAD [kg] [lb] versus INFLATION PRESSURE [bar] [PSI]									
				RECOM-MENDED	ALTERNA-TIVE	O.D.	O.W.	O.T.D. [mm] [32nd]	S.L.R.	R.C.				1,50	1,50	1,50	1,50	1,50	1,50	1,50	1,50	1,50	
														21	21	21	21	21	21	21	21	21	
20.5-25	16	SKZ	TBLs	17.00/2.0	17.00/1.7	1505	561	33	362	2397	81	A2	L3	-	5500	5900	6300	6700	7100	7500	7900	8250	
														-	12150	13000	13900	14800	15650	16550	17450	18200	
						59.3	22.1	42	14.3	94.4	156	A8	G3	3325	3550	3775	4000	-	-	-	-	-	-
														7350	7850	8350	8850	-	-	-	-	-	
											167	B	E3	3800	4150	4500	4825	5150	5450	-	-	-	
														8400	9150	9950	10650	11350	12050	-	-	-	



WHEEL LOADERS ARTICULATED DUMP TRUCKS SCRAPERS

**TOUGH
IS OUR
WAY OF
LIFE**

SOLIDEAL RM E3/L3

GOOD DURABILITY

Lug to void ratio: 60-65%

PERFORMANCE	Puncture resistance	●●●●●
	Driving comfort	●●●●●●
	Self cleanout	●●●●●●
	Sidewall protection	●●●●●●
	Rim protection	●●●●●

Off-Road • On-Road



Features

Wide Footprint

High Lug-to-Void Ratio

Benefits

Excellent performance in abrasive and rocky conditions

Provides excellent stability and durability

TIRE SIZE	PR	TT / TBLs	RIM SIZE		ACTUAL TIRE DIMENSIONS [mm] / [Inches]					LOAD INDEX	SPEED SYMBOL	SERVICE	TRA CODE	MAXIMUM TIRE LOAD [kg] / [lb] versus INFLATION PRESSURE [bar] / [PSI]															
			RECOMENDED	ALTERNATIVE	O.D.	O.W.	O.T.D. [mm] [32nd]	S.L.R.	R.C.					1.50	1.75	2.00	2.25	2.50	2.75	3.00	3.25	3.50	3.75	4.00	4.25	4.50	4.75		
														21	25	29	32	36	39	43	46	50	54	57	61	64	68		
17.5-25	16	TBLs	14.00/1.5	14.00/1.3 13.00/1.4 (DC)	1350	445	30	602	4029	177	A2	LOADER-DOZER	L3	-	4250	4500	4750	5050	5350	5600	5900	6150	6400	6650	6900	7100	7300		
					-	9400	9950	10500	11150	11800	12350	13000	13600	14150	14700	15250	15650	16100	-	-	-	-	-	-	-	-	-	-	-
					2350	2625	2900	2900	3100	3350	-	-	-	-	-	-	-	-	-	-	-	-	-	-	-	-	-	-	-
20.5-25	20	TBLs	17.00/2.0	-	1490	520	32	665	4447	186	A2	LOADER-DOZER	L3	-	5500	5900	6300	6700	7100	7500	7900	8250	8550	8875	9200	9500	-		
					-	12150	13000	13900	14800	15650	16550	17450	18200	18850	19600	20300	20950	-	-	-	-	-	-	-	-	-	-	-	-
					3800	4150	4500	4825	5150	5450	5750	6000	-	-	-	-	-	-	-	-	-	-	-	-	-	-	-	-	-
23.5-25	20	TBLs	19.50/2.5	-	1615	595	36	720	4820	191	A2	LOADER-DOZER	L3	-	7000	7500	8000	8500	9000	9500	10000	10400	10900	-	-	-	-		
					-	15450	16550	17650	18750	19850	20950	22100	22950	24050	-	-	-	-	-	-	-	-	-	-	-	-	-	-	
					5300	4750	6150	6550	6950	7300	-	-	-	-	-	-	-	-	-	-	-	-	-	-	-	-	-	-	
26.5-25	28	TBLs	22.00/3.0	-	11700	10900	13600	14450	15350	16100	-	-	-	-	-	-	-	-	-	-	-	-	-	-	-	-			
					-	9500	10000	10500	11000	11500	12050	12650	13200	13600	14000	14500	15000	15500											
					-	20950	22100	23200	24300	25400	26400	27900	29150	30000	30900	32000	33100	34200											
29.5-25	28	TBLs	25.00/3.5	-	-	-	-	-	-	203	A2	LOADER-DOZER	L3	-	9500	10000	10500	11000	11500	12050	12650	13200	13600	14000	14500	15000	15500		
					-	6750	7300	7800	8250	8750	9250	9650	10000	-	-	-	-	-	-	-	-	-	-	-	-	-			
					-	14900	16100	17200	18200	19300	20400	21300	22100	-	-	-	-	-	-	-	-	-	-	-	-	-	-		
29.5-25	28	TBLs	25.00/3.5	-	-	-	-	-	-	207	A2	LOADER-DOZER	L3	-	10900	11500	12150	12850	13600	14000	15000	15500	16000	17000	17500	-			
					-	24050	25400	26800	28350	30000	30900	33100	34200	35300	37550	38650	-	-	-	-	-	-	-	-	-				
					-	8000	8500	9250	10000	10300	10900	11500	-	-	-	-	-	-	-	-	-	-	-	-	-	-			
29.5-25	28	TBLs	25.00/3.5	-	-	-	-	-	-	203	B	EARTHMOVER	E3	-	17650	18750	20400	22100	22750	24050	25400	-	-	-	-	-			
					-	-	-	-	-	-	-	-	-	-	-	-	-	-	-	-	-	-	-	-	-	-			
					-	-	-	-	-	-	-	-	-	-	-	-	-	-	-	-	-	-	-	-	-	-			



WHEEL LOADERS MOTOR GRADERS ARTICULATED DUMP TRUCKS

**TOUGH
IS OUR
WAY OF
LIFE**

SOLIDEAL SRGP E3/L3/G3

RADIAL

**EXCELLENT
PERFORMANCE
AND DURABILITY**

Lug to void ratio:
New 55-60% Worn 60-65%

PERFORMANCE	Puncture resistance	••••••••
	Driving comfort	••••••••••
	Self cleanout	••••••
	Sidewall protection	•••
	Rim protection	•••

Off-Road • On-Road



Features

- Heavy-duty Carcass
- Offset, tapered tread block design
- Non-directional, stepped tread design

Benefits

- Improved side impact resistance and stability
- Reduced vibration and full-service tread life
- Even wearing and good cleanout

TIRE SIZE	PR / *	TT / TBL'S	RIM SIZE		ACTUAL TIRE DIMENSIONS [mm] [inches]					LOAD INDEX (*)	LOAD INDEX (**)	SPEED SYMBOL	SERVICE	TRA CODE	MAXIMUM TIRE LOAD [kg] [lb]																										
			RECOMMENDED	ALTERNATIVE	O.D.	O.W.	O.T.D. [mm] [32nd]	S.L.R.	R.C.						1.25	1.50	1.75	2.00	2.25	2.50	2.75	3.00	3.25	3.50	3.75	4.00	4.25	4.50	4.75	5.00	5.25	5.50	5.75	6.00	6.25	6.50					
															18	21	25	29	32	36	39	43	46	50	54	57	61	64	68	71	75	79	82	86	89	93					
17.5R25	DUAL STAR ® ***	TBL'S	14.00/1.5	14.00/1.3 (DC); 13.00/1.4 (DC)	1348	469	28	601	4023	176	182	A2	LOADER-DOZER	L3/E3/G3	-	-	-	8050	8800	9350	10200	10700	11700	12300	12800	6000	6150	6500	6700	7100(*)	7300	7500	7750	8000	8250	8500(**)					
					-	-	-	3650	4000	4250	4625	4850	5300	5600	5800	13250	13600	14350	14800	15650(*)	16100	16550	17100	17650	18200	18750(**)	-	-	-	-	-	-	-	-	-	-	-				
					-	-	-	-	-	-	3350	3550	3750	4000	4125(*)	4375	4625	4750	5000	5150	5450(**)	-	-	-	-	-	-	-	-	-	-	-	-	-	-	-	-	-	-	-	
					53.1	18.5	35	23.7	158.4	153	NA	A8	GRADER	L3/E3/G3	1850	2120	2360	2575	2900	3075	3350	3650(*)	-	-	-	-	-	-	-	-	-	-	-	-	-	-	-	-	-	-	
20.5R25	DUAL STAR ® ***	TBL'S	17.00/2.0	17.00/1.7 (* use); 17.00/2.0 F	1492	548	33	665	4453	186	193	A2	LOADER-DOZER	L3/E3/G3	-	-	-	10500	11400	12300	13200	13900	14800	15700	16500	8000	8250	8750	9000	9500(*)	9750	10000	10300	10900	11200	11500(**)					
					-	-	-	4750	5150	5600	6000	6300	6700	7100	7500	17650	18200	19300	19850	20950(*)	21500	22100	22750	24050	24700	25400(**)	-	-	-	-	-	-	-	-	-	-	-	-	-		
					-	-	-	-	-	-	4375	4750	5000	5300	5600(*)	5800	6150	6500	6700	6900	7300(**)	-	-	-	-	-	-	-	-	-	-	-	-	-	-	-	-	-	-	-	-
					58.7	21.6	42	26.2	175.3	161	NA	A8	GRADER	L3/E3/G3	2430	2800	3150	3450	3875	4125	4375	4625(*)	-	-	-	-	-	-	-	-	-	-	-	-	-	-	-	-	-	-	-
23.5R25	DUAL STAR ® ***	TBL'S	19.50/2.5	19.50/2.5 F	1615	624	35	720	4820	195	201	A2	LOADER-DOZER	L3/E3/G3	-	-	-	13200	14300	15700	17100	18200	19300	20400	21500	10300	10600	11200	11500	12150(*)	12500	12850	13200	13600	14000	14500(**)					
					-	-	-	6000	6500	7100	7750	8250	8750	9250	9750	22750	23400	24700	25400	26800(*)	27600	28350	29150	30000	30900	32000(**)	-	-	-	-	-	-	-	-	-	-	-	-	-		
					-	-	-	-	-	-	5600	6000	6500	6700	7100(*)	7500	7750	8250	8500	9000	9250(**)	-	-	-	-	-	-	-	-	-	-	-	-	-	-	-	-	-	-	-	-
					63.6	24.6	44	28.3	189.8	170	NA	A8	GRADER	L3/E3/G3	3150	3550	4000	4500	4875	5300	5600	6000(*)	-	-	-	-	-	-	-	-	-	-	-	-	-	-	-	-	-	-	-
26.5R25	DUAL STAR ® ***	TBL'S	22.00/3.0	22.00/3.0 F	1746	704	40	779	5211	202	209	A2	LOADER-DOZER	L3/E3/G3	-	-	-	16500	18200	19800	20900	22700	24000	25400	26800	12850	13200	14000	14500	15000(*)	15500	16000	16500	17000	18000	18500(**)					
					-	-	-	7500	8250	9000	9500	10300	10900	11500	12150	28350	29150	30900	32000	33100(*)	34200	35300	36400	37550	39750	40850(**)	-	-	-	-	-	-	-	-	-	-	-	-	-		
					-	-	-	-	-	-	7100	7500	8000	8500	9000(*)	9500	9750	10300	10600	11200	11500(**)	-	-	-	-	-	-	-	-	-	-	-	-	-	-	-	-	-	-	-	-
					68.7	27.7	50	30.7	205.2	184	193	B	EARTH-MOVER	L3/E3/G3	-	-	-	-	-	15650	16550	17650	18750	19850(*)	20950	21500	22750	23400	24700	25400(**)	-	-	-	-	-	-	-	-	-	-	-
29.5R25	DUAL STAR ® ***	TBL'S	25.00/3.5	25.00/3.5 F	1870	782	40	834	5581	208	216	A2	LOADER-DOZER	L3/E3/G3	-	-	-	-	-	-	-	-	-	-	-	15500	1600	1700	17500	18000(*)	19000	19500	20000	20600	21200	22400(**)					
					-	-	-	-	-	-	-	-	-	-	-	-	-	-	-	-	-	-	-	-	-	-	-	-	-	-	-	-	-	-	-	-	-	-	-		
					-	-	-	-	-	-	-	-	-	-	-	-	-	-	-	-	-	-	-	-	-	-	-	-	-	-	-	-	-	-	-	-	-	-	-	-	
					73.6	30.8	50	32.8	219.7	191	200	B	EARTH-MOVER	L3/E3/G3	-	-	-	-	-	8500	9250	9750	10300	10900(*)	11500	11800	12500	12850	13600	14000(**)	-	-	-	-	-	-	-	-	-	-	-



WHEEL LOADERS

**TOUGH
IS OUR
WAY OF
LIFE**

SOLIDEAL SRLD L5

RADIAL

**EXCELLENT
HARD SURFACE
DURABILITY**

Lug to void ratio: 65-70%

PERFORMANCE	Puncture resistance	●●●●●●●●
	Driving comfort	●●●●●●●●
	Self cleanout	●●●
	Sidewall protection	●●●●
	Rim protection	●●●●

Off-Road • On-Road



Features

Extra-deep Tread

Robust Dual-star Carcass

Heavy-duty Sidewall Construction

Benefits

Longest life cycle in harsh applications

Provides excellent stability and Enhanced loading capability

Resists deformations under heavy load operation and protects against impacts

TIRE SIZE	PR / *	TT / TBLs	RIM SIZE		ACTUAL TIRE DIMENSIONS [mm] / [inches]					LOAD INDEX (*)	LOAD INDEX (**)	SPEED SYMBOL	TRA CODE	MAXIMUM TIRE LOAD [kg] / [lb]																									
			RECOM-MENDED	ALTER-NATIVE	O.T.D. [mm] [32nd]	O.D.	O.W.	S.L.R.	R.C.					1.25	1.50	1.75	2.00	2.25	2.50	2.75	3.00	3.25	3.50	3.75	4.00	4.25	4.50	4.75	5.00	5.25	5.50	5.75	6.00	6.25	6.50				
														18	21	25	29	32	36	39	43	46	50	54	57	61	64	68	71	75	79	82	86	89	93				
20.5R25	**	TBLs	17.00/2.0	17.00/1.7 (* use); 17.00/2.0 F	74	1544	517	-	-	186	193	A2	L5	-	-	-	10500	11400	12300	13200	13900	14800	15700	16500	8000	8250	8750	9000	9500(*)	9750	10000	10300	10900	11200	11500(**)				
					-	-	-	4750	5150	5600	6000	6300	6700	7100	7500	17650	18200	19300	19850	20950(*)	21500	22100	22750	24050	24700	25400(**)	-	-	-	-	-	-	-	-	-	-	-		
					-	-	-	-	-	-	-	4375	4750	5000	5300	5600(*)	5800	6150	6500	6700	6900	7300(**)	-	-	-	-	-	-	-	-	-	-	-	-	-	-	-	-	-
					2.91	60.79	20.35	-	-	161	NA	A8	L5	2430	2800	3150	3450	3875	4125	4375	4625(*)	-	-	-	-	-	-	-	-	-	-	-	-	-	-	-	-	-	
23.5R25	**	TBLs	19.50/2.5	19.50/2.5 F	80	1673	605	-	-	195	201	A2	L5	-	-	-	13200	14300	15700	17100	18200	19300	20400	21500	10300	10600	11200	11500	12150(*)	1250	12850	13200	13600	14000	14500(**)				
					-	-	-	6000	6500	7100	7750	8250	8750	9250	9750	22750	23400	24700	25400	26800(*)	2750	28350	29150	30000	30900	32000(**)	-	-	-	-	-	-	-	-	-	-	-		
					3.15	65.87	23.82	-	-	176	185	B	L5	-	-	-	-	-	5600	6000	6500	6700	7100(*)	7500	7750	8250	8500	9000	9250(**)	-	-	-	-	-	-	-	-	-	-
					-	-	-	-	-	-	-	-	12350	13250	14350	14800	15650(*)	16550	17100	18200	18750	19850	20400(**)	-	-	-	-	-	-	-	-	-	-	-	-	-	-	-	-
26.5R25	**	TBLs	22.00/3.0	22.00/3.0 F	86	1791	700	-	-	202	209	A2	L5	-	-	-	16500	18200	19800	20900	22700	24000	25400	26800	12850	13200	14000	14500	15000(*)	15500	16000	16500	17000	18000	18500(**)				
					-	-	-	7500	8250	9000	9500	10300	10900	11500	12150	28350	29150	30900	32000	33100(*)	34200	35300	36400	37550	39750	40850(**)	-	-	-	-	-	-	-	-	-	-	-		
					3.39	70.51	27.56	-	-	184	193	B	L5	-	-	-	-	-	7100	7500	8000	8500	9000(*)	9500	9750	10300	10600	11200	11500(**)	-	-	-	-	-	-	-	-	-	-
					-	-	-	-	-	-	-	-	15650	16550	17650	18750	19850(*)	20950	21500	22750	23400	24700	25400(**)	-	-	-	-	-	-	-	-	-	-	-	-	-	-	-	-
29.5R25	**	TBLs	25.00/3.5	25.00/3.5 F	92	1915	790	-	-	208	216	A2	L5	-	-	-	-	-	-	-	-	-	-	-	15500	1600	1700	17500	18000(*)	19000	19500	20000	20600	21200	22400(**)				
					-	-	-	-	-	-	-	-	-	-	-	-	-	-	-	-	-	-	-	-	-	34200	3550	3750	38650	39750(*)	41950	43050	44150	45450	46800	49450(**)			
					3.62	75.39	31.10	-	-	191	200	B	L5	-	-	-	-	-	8500	9250	9750	10300	10900(*)	11500	11800	12500	12850	13600	14000(**)	-	-	-	-	-	-	-	-		
					-	-	-	-	-	-	-	-	-	-	-	-	-	-	18750	20400	21500	22750	24050(*)	25400	26050	27600	28350	30000	30900(**)	-	-	-	-	-	-	-	-		



WHEEL LOADERS

**TOUGH
IS OUR
WAY OF
LIFE**

SOLIDEAL SRLS L5

RADIAL

**EXCELLENT
HARD SURFACE
DURABILITY**

Lug to void ratio: 100%

PERFORMANCE	Puncture resistance	●●●●●●●●
	Driving comfort	●●●●●●●●
	Self cleanout	●●●●●●●●
	Sidewall protection	●●●●
	Rim protection	●●●●



Features

Benefits

Robust Dual-star Carcass	Provides excellent stability and Enhanced loading capability
Extra-deep Smooth Tread	Greatest durability and resistance to flat tires in extreme hard surface applications
Flat Tread Profile	Enhanced stability and even wear
Robust Carcass	Enhanced load capacity, stability and puncture resistance

On-Road

TIRE SIZE	PR / *	TT / TBSL	RIM SIZE		ACTUAL TIRE DIMENSIONS [mm] [Inches]					LOAD INDEX (*)	LOAD INDEX (**)	SPEED SYMBOL	TRA CODE	MAXIMUM TIRE LOAD [kg] [lb]																										
			RECOM-MENDED	ALTER-NATIVE	O.D.	O.W.	O.T.D. [mm] [32nd]	S.L.R.	R.C.					1.25	1.50	1.75	2.00	2.25	2.50	2.75	3.00	3.25	3.50	3.75	4.00	4.25	4.50	4.75	5.00	5.25	5.50	5.75	6.00	6.25	6.50					
														18	21	25	29	32	36	39	43	46	50	54	57	61	64	68	71	75	79	82	86	89	93					
17.5R25	**	TBSL	14.00/1.5	14.00/1.3 (DC), 13.00/1.4 (DC)	1544	74	517	-	-	176	182	A2	L3/E3/G3	-	-	-	8050	8800	9350	10200	10700	11700	12300	12800	6000	6150	6500	6700	7100(*)	7300	7500	7750	8000	8250	8500(**)					
					-	-	-	3650	4000	4250	4625	4850	5300	5600	5800	13250	13600	14350	14800	15650(*)	16100	16550	17100	17650	18200	18750(**)	-	-	-	-	-	-	-	-	-	-	-	-	-	
					-	-	-	-	-	-	-	7400	7850	8300	8850	9100(*)	9650	10200	10500	11050	11350	12050(**)	-	-	-	-	-	-	-	-	-	-	-	-	-	-	-	-	-	
					1670	80	605	-	-	153	NA	A8	L3/E3/G3	1850	2120	2360	2575	2900	3075	3350	3650(*)	-	-	-	-	-	-	-	-	-	-	-	-	-	-	-	-	-	-	
					-	-	-	-	-	-	-	4100	4700	5200	5700	6400	6800	7400	8050(*)	-	-	-	-	-	-	-	-	-	-	-	-	-	-	-	-	-	-	-	-	-
					-	-	-	-	-	-	-	-	-	-	-	-	-	-	-	-	-	-	-	-	-	-	-	-	-	-	-	-	-	-	-	-	-	-	-	-
23.5R25	**	TBSL	19.50/2.5	19.50/2.5 F	1791	86	700	-	-	195	201	A2	L5	-	-	-	13200	14300	15700	17100	18200	19300	20400	21500	10300	10600	11200	11500	12150(*)	1250	12850	13200	13600	14000	14500(**)					
					-	-	-	6000	6500	7100	7750	8250	8750	9250	9750	22750	23400	24700	25400	26800(*)	2750	28350	29150	30000	30900	32000(**)	-	-	-	-	-	-	-	-	-	-	-	-	-	
					-	-	-	-	-	-	-	5600	6000	6500	6700	7100(*)	7500	7750	8250	8500	9000	9250(**)	-	-	-	-	-	-	-	-	-	-	-	-	-	-	-	-	-	-
					7031	3.39	27.56	-	-	176	185	B	L5	-	-	-	-	-	-	12250	13250	14350	14800	15650(*)	16550	17100	18200	18750	19850	20400(**)	-	-	-	-	-	-	-	-	-	-
					-	-	-	-	-	-	-	-	-	-	-	-	-	-	-	-	-	-	-	-	-	-	-	-	-	-	-	-	-	-	-	-	-	-	-	
					-	-	-	-	-	-	-	-	-	-	-	-	-	-	-	-	-	-	-	-	-	-	-	-	-	-	-	-	-	-	-	-	-	-	-	-
26.5R25	**	TBSL	22.00/3.0	22.00/3.0 F	1915	92	790	-	-	202	209	A2	L5	-	-	-	16500	18200	19800	20900	22700	24000	25400	26800	12850	13200	14000	14500	15000(*)	15500	16000	16500	17000	18000	18500(**)					
					-	-	-	7500	8250	9000	9500	10300	10900	11500	12150	28350	29150	30900	32000	33100(*)	34200	35300	36400	37550	39750	40850(**)	-	-	-	-	-	-	-	-	-	-	-	-	-	
					-	-	-	-	-	-	-	7100	7500	8000	8500	9000(*)	9500	9750	10300	10600	11200	11500(**)	-	-	-	-	-	-	-	-	-	-	-	-	-	-	-	-	-	-
					7539	3.62	31.10	-	-	184	193	B	L5	-	-	-	-	-	-	15650	16550	17650	18750	19850(*)	20950	21500	22750	23400	24700	25400(**)	-	-	-	-	-	-	-	-	-	-
					-	-	-	-	-	-	-	-	-	-	-	-	-	-	-	-	-	-	-	-	-	-	-	-	-	-	-	-	-	-	-	-	-	-	-	-
					-	-	-	-	-	-	-	-	-	-	-	-	-	-	-	-	-	-	-	-	-	-	-	-	-	-	-	-	-	-	-	-	-	-	-	-
29.5R29	**	TBSL	22.00/3.0	24.00/3.0	-	-	-	-	-	211	218	A2	L5	-	-	-	-	-	-	-	-	-	-	-	-	16500	17000	18000	18500	19500(*)	20000	20600	21200	22400	23000	23600(**)				
					-	-	-	-	-	-	-	-	-	-	-	-	-	-	-	-	-	-	-	-	-	-	-	-	-	-	-	-	-	-	-	-	-	-		
					-	-	-	-	-	-	-	9000	9750	10300	10900	11500(*)	12150	12500	13200	13600	14500	15000(**)	-	-	-	-	-	-	-	-	-	-	-	-	-	-	-	-	-	-
					-	-	-	-	-	-	-	-	-	-	-	-	-	-	-	-	-	-	-	-	-	-	-	-	-	-	-	-	-	-	-	-	-	-	-	-
					-	-	-	-	-	-	-	-	-	-	-	-	-	-	-	-	-	-	-	-	-	-	-	-	-	-	-	-	-	-	-	-	-	-	-	-
					-	-	-	-	-	-	-	-	-	-	-	-	-	-	-	-	-	-	-	-	-	-	-	-	-	-	-	-	-	-	-	-	-	-	-	-

**TOUGH
IS OUR
WAY OF
LIFE**

Find out more at Camoplastsolideal.com
or contact your authorized distributor

www.camoplastsolideal.com

Authorized Distributor



INTER-HERMES TRADE D.O.O.
Ugrinovački put 169N, Zemun - Beograd - Srbija
T/F: 011/3774-975 ; 3774-976
info@interhermes.com
www.interhermes.com



*camoplast
solideal*